

HEART OF THE NORTH TOURS

WISCONSIN'S

DOOR COUNTY
& GREEN BAY

September 19th - 22nd 2024

heartofthenorthtours.com or 1-833-424-2700

GW1091924

HEART OF THE NORTH TOURS

THE ONLY WAY TO ROLL!



Itinerary:

Day 1 Thursday, September 19

At-home pickup

A car pulls up, the driver ready to take your luggage, and off you go! Headed to board the coach, leaving your vehicle safely home.

Meet & Greet at Door County Visitor Bureau

Depart this morning and travel to Door County, Wisconsin. Upon arrival a representative from the Door County Visitors Bureau will meet you and provide insight to the area.

Two Nights in Sturgeon Bay, WI

Discover Wisconsin's beautiful Door County from the comfort of your Sturgeon Bay hotel, just minutes from all that the area has to offer from fishing on the bay to exploring the historic downtown area.

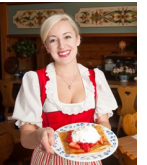
Dinner at Local Restaurant

Dinner is included this evening at a local restaurant. (D)

Day 2 Friday, September 20

Breakfast at Al Johnson's Swedish Restaurant

This morning you will have a unique and authentic Swedish breakfast experience at Al Johnson's Swedish Restaurant where live goats can be found grazing on the sod roof. It's quite a sight, and it's made this place one of the most famous restaurants in Door County. Visit the gift shop for a special Swedish souvenir to remember your travels.



Washington Island Ferry & Tour

Following breakfast you will board the Washington Island Ferry for a half-hour trip across the four mile passage-way between the tip of the county and the island known as "La Porte des Morts" or "the door of the dead". During your boat ride learn the history of the outlying islands and an intro to Washington Island.

Upon landing on the island, your local guide will provide a narrated tour, highlighting island features and attractions. Stops could include Stavkirke (Church), Schoolhouse Beach and Jacobsen Museum.



Door County Trolley Tour

Take an "Old Time" Trolley ride and see breathtaking vistas from Door County's scenic bluffs overlooking the islands. As we traverse the land, we'll share the legend and lore unique to each area. Don't forget to bring your camera. Learn from the locals the best places to wine, dine, and relax.



Traditional Door County Fish Boil Dinner

A traditional Door County fish boil, like the one served at the White Gull Inn, features freshly caught Lake Michigan whitefish caught by local fishermen and cooked outside over an open fire, just as it was one hundred years ago by the Scandinavian settlers of the Peninsula. The fish is cut in chunks and cooked in boiling water with small red potatoes. Salt is the only spice used. Fish oils rise to the surface of the boiling cauldron, and when the fish is perfectly done, the Master Boiler tosses a small amount of kerosene on the flames under the pot.

The great burst of flames causes the boilover, spilling the fish oils over the side of the pot and leaving the fish perfectly done, steaming hot and ready to serve. (B,D)

heartofthenorthtours.com

DOOR COUNTY, WI

Day 3 Saturday, September 21

Millionaires Row & West Islands Cruise

Capture the spirit of Door County as this tour combines great scenery, wildlife and human history. Start by heading south, viewing the beautiful shore homes along "Millionaire's" (Cottage) Row, one of Door County's most preferred addresses for the past 100 years. Turning west onto open waters, explore the Strawberry Islands and watch the white pelicans and cormorants, while also learning what is special about distant Chambers Island. Threading the needle between Adventure and Little Strawberry Islands, head back east, stopping off shore of Eagle Bluff Light-house for a photo op. Then, return along the beautiful cobblestone shores of Peninsula Park, you will learn the unique history of Sven's Bluff, the 1900's girls Camp Menagha and Door County's early European settlers.



Guided City Tour of Green Bay, Wisconsin

Travel this afternoon to Green Bay for a 1-1/2 hour city tour with your step on guide.



Overnight at the Radisson Hotel - Green Bay

Look forward to a comfortable stay at Radisson Hotel in Green Bay. The hotel is connected to the Oneida Casino which offers a \$20 Free Slot Play Bonus.

Oneida Casino

Oneida Casino is the state's premier gaming entertainment destination. With thousands of slot machines, all the most popular table games, a poker room, and bingo hall, An array of bars and dining options are available along with a \$20 Slot Play Bonus.

Indigenous Buffet

This evening enjoy an indigenous buffet including Oneida Beef Stew, Three Sister Vegetables, and fresh Corn Bread.

Oneida Smoke Dancers

This evening the Oneida Nation Dancers will demonstrate the different styles of pow-wow dances. Be prepared to join in the dancing to the beat of the drum. (B,D)



Day 4 Sunday, September 22

Oneida Nations Tour

After breakfast depart for the Oneida Nations Tour. The cultural tour includes stops at the Oneida cultural museum, the Oneida buffalo overlook, Oneida village area where life size log house and original log homes that Oneida's lived in when they moved here from New York during the 1820s. Final stop is at Oneida Market for natural products, Turtle Island gifts & Native Crafts.

Depart for Home

In the early afternoon, depart for home. (B)

Return Home!

As the coach pulls into the parking lot, your drivers and cars await to gather you, your luggage and any treasures you might have gotten on the tour, whisking you home!



CALL: 1-833-424-2700

DOOR COUNTY, WI



CALL: 1-833-424-2700

Limitations & Exclusions

Insurance benefits are not payable for any loss due to, arising or resulting from:

1. suicide, attempted suicide or any intentionally self-inflicted injury of You, a Traveling Companion, Family Member or Business Partner booked to travel with You, while sane or insane;
2. an act of declared or undeclared war;
3. participating in maneuvers or training exercises of an armed service, except while participating in weekend or summer training for the reserve forces of the United States, including the National Guard;
4. riding or driving in races, or speed or endurance competitions or events;
5. mountaineering (engaging in the sport of scaling mountains generally requiring the use of picks, ropes, or other special equipment);
6. participating as professional in a stunt, athletic or sporting event or competition;
7. participating in skydiving or parachuting except parasailing, hang gliding, bungee cord jumping, extreme skiing, skiing outside marked trails or heli-skiing, any race, speed contests, spelunking or caving, or scuba diving if the depth exceeds 120 feet (40 meters) or if You are not certified to dive and a dive master is not present during the dive;
8. piloting or learning to pilot or acting as a member of the crew of any aircraft;
9. being Intoxicated as defined herein, or under the influence of any controlled substance unless as administered or prescribed by a Legally Qualified Physician;
10. the commission of or attempt to commit a felony or being engaged in an illegal occupation;
11. dental treatment (except as coverage is otherwise specifically provided herein);
12. due to a Pre-Existing Condition, as defined in the Plan. The Pre-Existing Condition Limitation does not apply to the Emergency Medical Evacuation or Return of Remains coverage;
13. any amount paid or payable under any Worker's Compensation, Disability Benefit or similar law;
14. a loss or damage caused by detention, confiscation or destruction by customs;
15. Elective Treatment and Procedures;
16. medical treatment during or arising from a Trip undertaken for the purpose or intent of securing medical treatment;
17. failure of any tour operator, Common Carrier, or other travel supplier, person or agency to provide the bargained-for travel arrangements for reasons other than Bankruptcy or Default;
18. a mental or nervous condition, unless hospitalized for that condition while the Plan is in effect for You;
19. a loss that results from a Sickness, Injury, disease or other condition, event or circumstance which occurs at a time when the Plan is not in effect for You; or
20. an assessment from a Legally Qualified Physician advising You in writing that You, a Traveling Companion, Family Member or Business Partner booked to travel with You are not Medically Fit to Travel, as defined in the Plan, at the time of purchase of Coverage for a Trip.

The plans also contain exclusions that apply specifically to Baggage and personal Effects.

Trip Cancellation and Trip Interruption benefits are only payable if a trip is canceled or interrupted due to a covered peril

For R774 only: Excess Insurance: The insurance provided by this Plan shall be in excess if all other valid and collectible Insurance or indemnity. If at the time of the occurrence of any loss there is other valid and collectible insurance or indemnity in place, We shall be liable only for the excess of the amount of loss, over the amount of such other insurance or indemnity, and applicable deductible. Recovery of losses from other parties does not result in a refund of plan payment paid.

For R774D only: The plans also contain exclusions that apply specifically to Baggage and personal Effects. The insurance provided (except for Accident and Sickness Medical Expense, Emergency Medical Evacuation, Medical Repatriation and Return of Remains) shall be in excess of all other valid and collectible Insurance or indemnity. If at the time of the occurrence of any loss there is other valid and collectible insurance or indemnity in place, We shall be liable only for the excess of the amount of loss, over the amount of such other insurance or indemnity, and applicable deductible. Recovery of losses from other parties does not result in a refund of plan payment paid.

WAIVER OF PRE-EXISTING CONDITION EXCLUSION

The exclusion for Pre-Existing Condition will be waived provided:

- (a) Your payment for this Plan is received within 21 days of the date Your initial Payment or Deposit for Your Trip is received; and
- (b) You are not disabled from travel at the time Your plan payment is paid.

Non-Insurance Services

Generali Global Assistance

FootprintID®

Blue Ribbon Bags

Generali Global Assistance Non-Insurance Service

Multi-lingual professionals are available 24 hours a day to provide help, advice and referrals for medical emergencies. We will help you locate local physicians, dentists, or medical facilities, and provide services for:

- Medical Consultation & Monitoring
- Medical Evacuation Arrangements
- Emergency Medical Payments
- Prescription Assistance
- Repatriation of Remains Arrangement
- 24 Hour Legal Assistance
- Language Interpretation Services
- Emergency Cash Transfer

A complete list of these services is included in your Plan Document.
To contact Generali Global Assistance:

Within U.S. & Canada
1-855-205-1232

Collect Worldwide
1-954-370-3251

Portable Personal Health Record Provided By FootprintID®

FootprintID® provides a secure solution for individuals to take control of their medical records and enables immediate access wherever they are in the world.

- Medical and Health Information is always at your fingertips anywhere travel takes you
- Documents are easily shared with physicians
- We, mobile and telephone access with reliable 24/7 support
- FootprintID® works anywhere in the world
- Register at tripmate.footprintid.com

Blue Ribbon Bags provides a service that will track and expedite the return of your delayed airline baggage.

- Find and return checked baggage delayed by the airline
- Blue Ribbon Bags covers EVERY flight, on EVERY airline, everywhere in the world
- Blue Ribbon Bags will update you every step of the way. Don't waste time tracking your luggage!
- Report lost airline bags at tripmate.blueribbonbags.com

YOUR PLAN NUMBER:

BASIC PLAN # R774 | DELUXE PLAN # R774D

Customer Service and Claims

This advertisement contains highlights of the plans developed by Trip Mate Inc., which include travel insurance coverages underwritten by United States Fire Insurance Company, Principal Office located in Morristown, New Jersey, under form series, T210 et al and TP-401 et al, and non-insurance Travel Assistance Services provided by Generali Global Assistance, FootprintID®, and Blue Ribbon Bags. The terms of insurance coverages in the plans may vary by jurisdiction and not all insurance coverages are available in all jurisdictions. **Insurance coverages in these plans are subject to terms, limitations and exclusions including an exclusion for pre-existing medical conditions.** In most states, your travel retailer is not a licensed insurance producer/agent, and is not qualified or authorized to answer technical questions about the terms, benefits, exclusions and conditions of the insurance offered or to evaluate the adequacy of your existing insurance coverage. Your travel retailer may be compensated for the purchase of a plan and may provide general information about the plans offered, including a description of the coverage and price. The purchase of travel insurance is not required in order to purchase any other product or service from your travel retailer. CA DOI toll free number is 800-927-4357. The cost of your plan is for the entire plan, which consists of both insurance and non-insurance components. Individuals looking to obtain additional information regarding the features and pricing of each travel plan component, please contact Trip Mate, Inc. (dba Trip Mate Insurance in CA and UT; CA license #0805270); 880 SW 145th Avenue #400 Pembroke Pines, FL 33027; 1-833-297-2258; assistancefees@tripmate.com. While Trip Mate, Inc. markets the travel insurance in these plans on behalf of USF, non-insurance components of the plans were added to the plans by Trip Mate, Inc., and Trip Mate, Inc. does not receive compensation from USF for providing the non-insurance components of the plans.

HEART OF THE NORTH TOURS

THE ONLY WAY TO ROLL!



DOOR COUNTY

4 DAYS 3 NIGHTS

(Thursday - Sunday)

Sept 19th - 22nd, 2024

Touring Door County is a delightful escape into a world of scenic beauty and charming waterfront communities. With its picturesque coastline along Lake Michigan, we will explore quaint villages dotted with art galleries, boutiques, and cozy cafes, sampling local treats like cherry pie. Behold iconic lighthouses, ferry over to Washington Island for a tour & enjoy the mesmerizing views both on the water and on land! Experience a traditional fish boil dinner, see the goats on the roof at Al Johnson's Swedish Restaurant and much more! Our tour of Door County offers a fun, relaxing & rejuvenating getaway which will long be remembered.

Tour Highlights:

- Ride the Washington Island Ferry
- Tour Washington Island
- Door County Trolley Tour
- Fish Creek Scenic Boat Tour
- Guided Green Bay City Tour
- Oneida Smoke Dancer Experience
- Oneida Nation Tour
- Indigenous Dinner Buffet

Also:

- 3 Nights Lodging
- Six Included meals:
- Three Breakfasts
- Three Dinners
- All Taxes & Tips on above services
- Luggage Handling when available
(one bag per person)



Pricing per person - based on room occupancy				
Description:	Double:	Triple:	Quad:	Single:
Tour cost:	\$1,799	\$1,749	\$1,699	\$2,099
TripAssure Basic	\$126*	\$122*	\$119*	\$147*
TripAssure Deluxe	\$153*	\$149*	\$144*	\$178*
Cancellation Waiver opt:	\$120	\$120	\$120	\$150

NOTE: Cancellation Waiver opt is NOT insurance - it adds protection to cancel for any reason - see offer for full details

*The plan cost includes the plan premium and a fee for the non-insurance assistance services.

TripAssure is a registered trademark of Trip Mate - Travel protection is not required, but is highly recommended. Please contact Trip Mate customer service for all details about Trip Protection: 1-833-297-2258

\$400 per person deposit due with reservation
Final Payment is due by August 5th, 2024

And! As always on every multiple-day HEART OF THE NORTH TOUR:

- **At-home pickup** within designated zones at **NO Additional Charge**
- Deluxe Motorcoach driven by an experienced professional driver
- Free Bottled Water and Free on-board snacks!
- Free on-board WiFi! (within the United States)
- The attentive guidance, experience & hospitality of **Two HEART OF THE NORTH TOURS** Professional tour managers at your service throughout the entire tour!

CALL: 1-833-424-2700