

HEART OF THE NORTH TOURS

IOWA AMANAS TO HOLLYWOOD



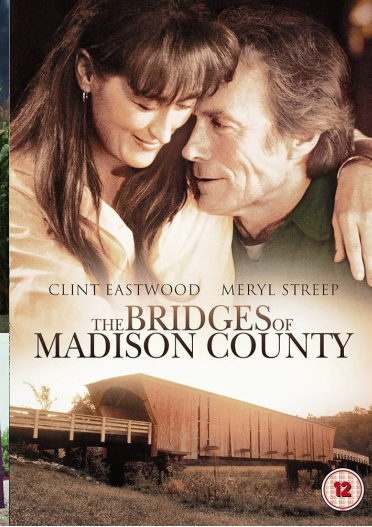
August 26th - 28th 2024

heartofthenorthtours.com or 1-833-424-2700

GIA082624

HEART OF THE NORTH TOURS

THE ONLY WAY TO ROLL!



Itinerary:

Day 1 Monday, August 26

At-home pickup

A car pulls up, the driver ready to take your luggage, and off you go! Headed to board the coach, leaving your vehicle safely home.

Bridges of Madison County Tour

The afternoon features sightseeing with a guided Bridges of Madison County Tour. Madison County is the Covered Bridge Capital of Iowa, with the largest group of covered bridges that exists in one area in the western half of the Mississippi Valley. Your tour will cover the construction and history of the bridges, the movie production of "the Bridges of Madison County" starring Clint Eastwood and Meryl Streep and a variety of local historical information.

Visit John Wayne's Birthplace & Museum

The afternoon of Cinema excitement doesn't end there however, as you also see John Wayne's Birthplace and Museum. His modest home in Winterset has been restored to its 1907 appearance with authentic furnishings, and features memorabilia such as the eyepatch worn in True Grit.

Dinner at the Machine Shed Restaurant

Stop for dinner this evening at the Machine Shed, honoring the American farmers, the restaurant is located at the entrance of Living History Farms. Enjoy farm to table food at its finest.

Overnight Lodging, Des Moines, Iowa

After visiting some "Hollywood" sites and dinner, overnight in Des Moines, Iowa. **(D)**

Day 2 Tuesday, August 27

Tour and Shopping at Amana Colonies

Enjoy a morning of sightseeing in the Amana Colonies with a local guide. Then spend your afternoon shopping in the largest village of Amana with its shops, galleries, and German-American restaurants where you can lunch on your own.

Kalona, IA Amish Culture Tour

This afternoon, enjoy a local guide who will talk about the customs of the Amish and Mennonites in Kalona, Iowa. A brief driving tour will be part of your visit.

Dinner at the Ox Yoke Inn

Tonight's dinner is at one of the Amana's Colonies best restaurants, the famous Ox Yoke Inn. Founded in 1940 in the Village of Amana The Ox Yoke Inn has a reputation of fresh, quality cooking and "Family Style" service is based upon a unique menu of old world signature entrees, and recipes featuring traditional German and American favorites.

One Night Lodging - Amana, IA

Enjoy the upscale boutique hotel located in the newly restored Amana Woolen Mill complex. **(B, D)**

Day 3 Wednesday, August 28

Visit the Field of Dreams

After breakfast depart for home. On the way, stop in Dyersville, IA and visit the Field of Dreams Movie Site. Released in 1989, this movie has inspired millions and became an Academy Award nominee for "Best Picture of the Year." Hear stories about the home from its early days as the Lansing family homestead in the early 20th century to its rebirth as the set for the Kinsella family in the 1989 fantasy classic.

Enjoy a guided house tour followed by free time on the field.

Depart for home

We depart Dyersville for home. **(B)**

Return Home!

As the coach pulls into the parking lot, your drivers and cars await to gather you, your luggage and any treasures you might have gotten on the tour, whisking you home!

heartofthenorthtours.com

Limitations & Exclusions

Insurance benefits are not payable for any loss due to, arising or resulting from:

1. suicide, attempted suicide or any intentionally self-inflicted injury of You, a Traveling Companion, Family Member or Business Partner booked to travel with You, while sane or insane;
2. an act of declared or undeclared war;
3. participating in maneuvers or training exercises of an armed service, except while participating in weekend or summer training for the reserve forces of the United States, including the National Guard;
4. riding or driving in races, or speed or endurance competitions or events;
5. mountaineering (engaging in the sport of scaling mountains generally requiring the use of picks, ropes, or other special equipment);
6. participating as professional in a stunt, athletic or sporting event or competition;
7. participating in skydiving or parachuting except parasailing, hang gliding, bungee cord jumping, extreme skiing, skiing outside marked trails or heli-skiing, any race, speed contests, spelunking or caving, or scuba diving if the depth exceeds 120 feet (40 meters) or if You are not certified to dive and a dive master is not present during the dive;
8. piloting or learning to pilot or acting as a member of the crew of any aircraft;
9. being Intoxicated as defined herein, or under the influence of any controlled substance unless as administered or prescribed by a Legally Qualified Physician;
10. the commission of or attempt to commit a felony or being engaged in an illegal occupation;
11. dental treatment (except as coverage is otherwise specifically provided herein);
12. due to a Pre-Existing Condition, as defined in the Plan. The Pre-Existing Condition Limitation does not apply to the Emergency Medical Evacuation or Return of Remains coverage;
13. any amount paid or payable under any Worker's Compensation, Disability Benefit or similar law;
14. a loss or damage caused by detention, confiscation or destruction by customs;
15. Elective Treatment and Procedures;
16. medical treatment during or arising from a Trip undertaken for the purpose or intent of securing medical treatment;
17. failure of any tour operator, Common Carrier, or other travel supplier, person or agency to provide the bargained-for travel arrangements for reasons other than Bankruptcy or Default;
18. a mental or nervous condition, unless hospitalized for that condition while the Plan is in effect for You;
19. a loss that results from a Sickness, Injury, disease or other condition, event or circumstance which occurs at a time when the Plan is not in effect for You; or
20. an assessment from a Legally Qualified Physician advising You in writing that You, a Traveling Companion, Family Member or Business Partner booked to travel with You are not Medically Fit to Travel, as defined in the Plan, at the time of purchase of Coverage for a Trip.

The plans also contain exclusions that apply specifically to Baggage and personal Effects.

Trip Cancellation and Trip Interruption benefits are only payable if a trip is canceled or interrupted due to a covered peril

For R774 only: Excess Insurance: The insurance provided by this Plan shall be in excess if all other valid and collectible Insurance or indemnity. If at the time of the occurrence of any loss there is other valid and collectible insurance or indemnity in place, We shall be liable only for the excess of the amount of loss, over the amount of such other insurance or indemnity, and applicable deductible. Recovery of losses from other parties does not result in a refund of plan payment paid.

For R774D only: The plans also contain exclusions that apply specifically to Baggage and personal Effects. The insurance provided (except for Accident and Sickness Medical Expense, Emergency Medical Evacuation, Medical Repatriation and Return of Remains) shall be in excess of all other valid and collectible Insurance or indemnity. If at the time of the occurrence of any loss there is other valid and collectible insurance or indemnity in place, We shall be liable only for the excess of the amount of loss, over the amount of such other insurance or indemnity, and applicable deductible. Recovery of losses from other parties does not result in a refund of plan payment paid.

WAIVER OF PRE-EXISTING CONDITION EXCLUSION

The exclusion for Pre-Existing Condition will be waived provided:

- (a) Your payment for this Plan is received within 21 days of the date Your initial Payment or Deposit for Your Trip is received; and
- (b) You are not disabled from travel at the time Your plan payment is paid.

Non-Insurance Services

Generali Global Assistance

FootprintID®

Blue Ribbon Bags

Generali Global Assistance Non-Insurance Service

Multi-lingual professionals are available 24 hours a day to provide help, advice and referrals for medical emergencies. We will help you locate local physicians, dentists, or medical facilities, and provide services for:

- Medical Consultation & Monitoring
- Medical Evacuation Arrangements
- Emergency Medical Payments
- Prescription Assistance
- Repatriation of Remains Arrangement
- 24 Hour Legal Assistance
- Language Interpretation Services
- Emergency Cash Transfer

A complete list of these services is included in your Plan Document.
To contact Generali Global Assistance:

Within U.S. & Canada
1-855-205-1232

Collect Worldwide
1-954-370-3251

Portable Personal Health Record Provided By FootprintID®

FootprintID® provides a secure solution for individuals to take control of their medical records and enables immediate access wherever they are in the world.

- Medical and Health Information is always at your fingertips anywhere travel takes you
- Documents are easily shared with physicians
- We, mobile and telephone access with reliable 24/7 support
- FootprintID® works anywhere in the world
- Register at tripmate.footprintid.com

Blue Ribbon Bags provides a service that will track and expedite the return of your delayed airline baggage.

- Find and return checked baggage delayed by the airline
- Blue Ribbon Bags covers EVERY flight, on EVERY airline, everywhere in the world
- Blue Ribbon Bags will update you every step of the way. Don't waste time tracking your luggage!
- Report lost airline bags at tripmate.blueribbonbags.com

YOUR PLAN NUMBER:

BASIC PLAN # R774 | DELUXE PLAN # R774D

Customer Service and Claims

This advertisement contains highlights of the plans developed by Trip Mate Inc., which include travel insurance coverages underwritten by United States Fire Insurance Company, Principal Office located in Morristown, New Jersey, under form series, T210 et al and TP-401 et al, and non-insurance Travel Assistance Services provided by Generali Global Assistance, FootprintID®, and Blue Ribbon Bags. The terms of insurance coverages in the plans may vary by jurisdiction and not all insurance coverages are available in all jurisdictions. **Insurance coverages in these plans are subject to terms, limitations and exclusions including an exclusion for pre-existing medical conditions.** In most states, your travel retailer is not a licensed insurance producer/agent, and is not qualified or authorized to answer technical questions about the terms, benefits, exclusions and conditions of the insurance offered or to evaluate the adequacy of your existing insurance coverage. Your travel retailer may be compensated for the purchase of a plan and may provide general information about the plans offered, including a description of the coverage and price. The purchase of travel insurance is not required in order to purchase any other product or service from your travel retailer. CA DOI toll free number is 800-927-4357. The cost of your plan is for the entire plan, which consists of both insurance and non-insurance components. Individuals looking to obtain additional information regarding the features and pricing of each travel plan component, please contact Trip Mate, Inc. (dba Trip Mate Insurance in CA and UT; CA license #0805270); 880 SW 145th Avenue #400 Pembroke Pines, FL 33027; 1-833-297-2258; assistancefees@tripmate.com. While Trip Mate, Inc. markets the travel insurance in these plans on behalf of USF, non-insurance components of the plans were added to the plans by Trip Mate, Inc., and Trip Mate, Inc. does not receive compensation from USF for providing the non-insurance components of the plans.

HEART OF THE NORTH TOURS

THE ONLY WAY TO ROLL!



IOWA! Amanas to Hollywood!

3 DAYS 2 NIGHTS

(Monday - Wednesday)

August 26th - 28th, 2024

Who knew plain old farm land IOWA could be so interesting? From the Amana colonies to Amish villages, to Hollywood icons! See the birthplace of John Wayne, to the Bridges of Madison County, to the field of dreams - Costner, Eastwood, Burt Lancaster, Meryl Streep and so many other stars as well! Enjoy shopping, dinner & a night in the Amana Colonies, another in Des Moines! Entertaining. Fun. YES! & Interesting too!

Tour Highlights:

- Tour Bridges of Madison County
- Visit John Wayne's Birthplace
- Visit an Iowa winery & tasting
- Tour and Shop in the Amana Colonies
 - Furniture factory and Shop
 - Woolen Mill Complex
 - OX Yoke Inn Family Style Dinner
- Amish Culture Tour in Kalona
- Visit the Field of Dreams Movie Set
- Discover the differences between the Amish and Amana cultures
- Farm to Table dinner at the Machine Shed Restaurant

Also:

- 2 Nights of great accommodations!
- Four Included meals:
 - Two Hotel Breakfasts
 - Two Dinners
- All Taxes & Tips on above services
- Luggage Handling
(one bag per person)



Pricing per person - based on room occupancy				
Description:	Double:	Triple:	Quad:	Single:
Tour cost:	\$1,239	\$1,189	\$1,139	\$1,439
TripAssure Basic	\$87*	\$83*	\$80*	\$101*
TripAssure Deluxe	\$105*	\$107*	\$100*	\$142*
Cancellation Waiver opt:	\$90	\$90	\$90	\$90

NOTE: Cancellation Waiver opt is NOT insurance - it adds protection to cancel for any reason - see offer for full details

**The plan cost includes the plan premium and a fee for the non-insurance assistance services.*

TripAssure is a registered trademark of Trip Mate - Travel protection is not required, but is highly recommended. Please contact Trip Mate customer service for all details about Trip Protection: 1-833-297-2258

\$350 per person deposit due with reservation
Final Payment is due by July 12th, 2024

And! As always on every multiple-day HEART OF THE NORTH TOUR:

- **At-home pickup** within designated zones at **NO Additional Charge**
- Deluxe Motorcoach driven by an experienced professional driver
- Free Bottled Water and Free on-board snacks!
- Free on-board WiFi! (within the United States)
- The attentive guidance, experience & hospitality of **Two HEART OF THE NORTH TOURS** Professional tour managers at your service throughout the entire tour!



CALL: 1-833-424-2700