

HEART OF THE NORTH TOURS

TRAINS OF THE OLD WEST!

**THE RAILS OF
COLORADO &
NEW MEXICO**

heartofthenorthtours.com or 833-424-2700

July 9th - 17th 2024

GC0070924

HEART OF THE NORTH TOURS

THE ONLY WAY TO ROLL!



Itinerary:

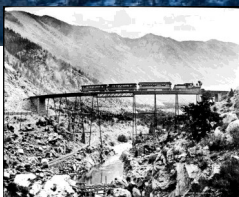
Day 1 Tuesday, July 9

At-home pickup

A car pulls up, the driver ready to take your luggage, and off you go! Headed to board the coach, leaving your vehicle safely home.

Overnight in Lincoln, NE

Check in to your hotel for the night in Lincoln, Nebraska. Dinner is on your own this evening.



Day 2 Wednesday, July 10

Visit Golden Spike Tower and Visitors Center

The Golden Spike Tower offers guests a bird's eye view of the World's Largest Classification Yard. Take a ride up the elevator to the 7th floor open air observation deck to experience the sights and sounds of the rail yard, or the 8th floor for enclosed viewing. The Golden Spike Tower features a courtyard proudly flying the 23 flags representing each state Union Pacific Railroad serves. Truly a once in a lifetime experience with more trains than you can keep track of!

Deluxe Accommodations near Denver

Check into your home for the night near Denver at the Drury Inn. Dinner is on your own, but the hotel offers a 5:30 Kickback meal. **(B,K)**

Day 3 Thursday, July 11

Tommyknocker Brewery

On the way to Georgetown, we will make a stop at Tommyknocker Brewery in Idaho Springs, Colorado where you can have lunch on your own. For more than 25 years, Tommyknocker Brewery has been passionately crafting award winning ales & lagers and has been awarded over 100 medals from a multitude of local, national, and international competitions.



Georgetown Loop Scenic Railroad

Next, head to Georgetown (at 8,500 feet she was once known as the 'Silver Queen of Colorado') here your first train ride is on the Georgetown Scenic Railroad. An old-time steam locomotive chugging its way up the canyon, hauling your train past the remains of several gold and silver mines. This open car train takes you between Georgetown and Silver Plume, over 2 miles apart, over mountainous terrain, requiring trestles, cuts, fills, loops, and curves totaling 3.1 miles of narrow gauge track.

Overnight in Grand Junction, Colorado

Check in to your Grand Junction hotel for an overnight stay.

Dinner at Famous Dave's

Treat yourself to authentic, pit-smoked BBQ, made-from-scratch sides, and handcrafted dessert dinner at Famous Dave's in Grand Junction. **(B,D)**

Day 4 Friday, July 12

Jeep Tour & Box Lunch

Today, take an exhilarating three hour Jeep Tour over 12,000 foot Corkscrew Pass into the Red Mountains. You ride beside high mountain cliffs over hanging mining trails where the clear air and the color of the red mountains are simply astonishing. A picnic lunch will be included.



Durango & Silverton Narrow Gauge RR

The jeep tour ends in Historic Silverton, CO where you board train #2 the Silverton-Durango Railroad. This steam locomotive travels along the Animas River winding through spectacular & breathtaking canyons in the remote wilderness of San Juan National Forest. You may feel as

heartofthenorthtours.com

Trains of the Old West!

though you are reliving history as you travel on the same tracks that miners, cowboys and settlers of the Old West took over a century ago.



Overnight Sky Ute Casino

Sky Ute Casino Resort is a luxury hotel in the Durango and Ignacio, Colorado area. The resort welcomes guests with an inviting respite from everyday life in the exciting & beautiful Durango area. Also enjoy the Las Vegas-style gaming and a variety of dining options available on the property.

Dinner at Gazpacho

Enjoy dinner tonight at Gazpacho's, a locals favorite and a treat for visitors, Gazpacho brings great food, atmosphere, and community to every patron. (B,L,D)

Day 5 Saturday, July 13

Ride the Cumbres & Toltec RR with Lunch

Early this morning you travel to Chama, New Mexico for a ride on train #3 The Cumbres & Toltec Railroad. Perhaps the most beautiful ride in America, it is rugged, narrow gauge, coal-fired, steam powered mountain railroad traversing 64 miles of unparalleled scenery.

You climb through an unspoiled landscape, past historic railroad structures dating back to the turn of the twentieth century. You enjoy the grandeur of the Rocky Mountains as this sure-footed locomotives rolls through tunnels, above deep gorges and over Cumbres Pass. A stop is made for an included lunch at the lonely Osier Dining Hall near the halfway point.



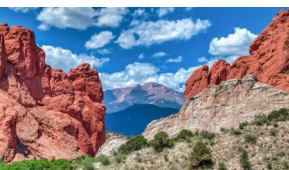
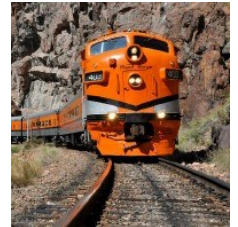
Holiday Inn Express - Alamosa, Colorado

Check into your Alamosa hotel for an overnight stay. Dinner is included this evening at an area restaurant. (B,L,D)

Day 6 Sunday, July 14

Ride the Royal Gorge Railroad with Lunch

Today ride the Royal Gorge Train for a scenic journey through the spectacular Royal Gorge. Since 1879, these tracks have followed the winding, tumbling Arkansas River deep within the soaring, 1,000-foot granite cliffs of Colorado's Royal Gorge. The Royal Gorge Route is a quality, Colorado attraction – no thrill rides or cotton candy – just rugged scenery. This ride also includes a delicious lunch.



Guided Tour - Garden of the Gods

This afternoon, tour the Garden of the Gods Park, a Registered National Natural Landmark in Colorado Springs. Learn of the park's geology with the 14-minute movie, and experience Native-American culture.

Two Nights Lodging, Drury Inn Colorado Springs

Check into the Drury Inn Colorado Springs for a two night stay. Dinner is on your own, however you may wish to take advantage of the 5:30 Kickback meal at the hotel. (B,L,K)

Day 7 Monday, July 15

Manitou Cliff Dwellings

Tour the Manitou Cliff Dwellings, located at the foot of Pikes Peak. Authentic Anasazi cliff dwellings, built more than 700 years ago, await you here. These mountain dwellings are a rare historical treasure and depict the lives, culture and architectural achievements of Southwestern Native Americans. There are no "Do Not Touch" signs. You are free to touch and even go inside these fascinating architectural remnants of an American Indian culture that roamed the Four Corners area of the Southwest from 1200 B.C. to A.D. 1300.



Ride the Pikes Peak Cog Railway

New trains, new depot, new Summit Visitor Center, new track, and one of the most unique experiences in the world. It's historic: we've been climbing to the top of Pikes Peak since 1891. It's emotionally moving: this place inspired "America the Beautiful", written by Katharine Lee Bates, whose experience in 1893 on top of Pikes Peak moved her to pen the poem that became one of the most patriotic songs honoring America. We take you to the top of Pikes Peak, America's Mountain, but this journey is so much more than that... it's a lifetime experience.

Chuckwagon Dinner at Flying W Ranch

Dinner this evening will be at the Flying W Ranch. Enjoy a real Chuckwagon Dinner and be entertained by the Flying W Wranglers. The Wranglers specialize in beautiful 3-part vocal harmonies about the romantic American Cowboy. (B,D)

Day 8 Tuesday, July 16

Overnight in Grand Island, NE

Check into your home for the night in Grand Island, Nebraska.

Dinner Included at a Local Restaurant

Enjoy dinner tonight at a local restaurant. (B,D)

Day 9 Wednesday, July 17

Depart for Home

After a hearty breakfast at the hotel, check out and travel home. (B)

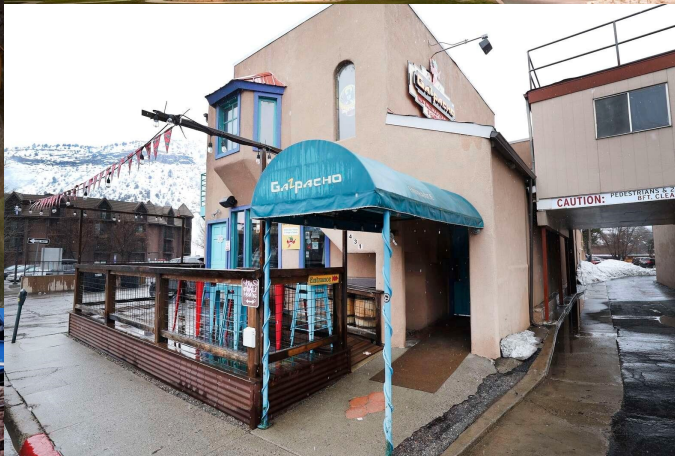
Return Home!

As the coach pulls into the parking lot, your drivers and cars await to gather you, your luggage and any treasures you might have gotten on the tour, whisking you home!



CALL: 1-833-424-2700

Trains of the Old West!



CALL: 1-833-424-2700

Limitations & Exclusions

Insurance benefits are not payable for any loss due to, arising or resulting from:

1. suicide, attempted suicide or any intentionally self-inflicted injury of You, a Traveling Companion, Family Member or Business Partner booked to travel with You, while sane or insane;
2. an act of declared or undeclared war;
3. participating in maneuvers or training exercises of an armed service, except while participating in weekend or summer training for the reserve forces of the United States, including the National Guard;
4. riding or driving in races, or speed or endurance competitions or events;
5. mountaineering (engaging in the sport of scaling mountains generally requiring the use of picks, ropes, or other special equipment);
6. participating as professional in a stunt, athletic or sporting event or competition;
7. participating in skydiving or parachuting except parasailing, hang gliding, bungee cord jumping, extreme skiing, skiing outside marked trails or heli-skiing, any race, speed contests, spelunking or caving, or scuba diving if the depth exceeds 120 feet (40 meters) or if You are not certified to dive and a dive master is not present during the dive;
8. piloting or learning to pilot or acting as a member of the crew of any aircraft;
9. being Intoxicated as defined herein, or under the influence of any controlled substance unless as administered or prescribed by a Legally Qualified Physician;
10. the commission of or attempt to commit a felony or being engaged in an illegal occupation;
11. dental treatment (except as coverage is otherwise specifically provided herein);
12. due to a Pre-Existing Condition, as defined in the Plan. The Pre-Existing Condition Limitation does not apply to the Emergency Medical Evacuation or Return of Remains coverage;
13. any amount paid or payable under any Worker's Compensation, Disability Benefit or similar law;
14. a loss or damage caused by detention, confiscation or destruction by customs;
15. Elective Treatment and Procedures;
16. medical treatment during or arising from a Trip undertaken for the purpose or intent of securing medical treatment;
17. failure of any tour operator, Common Carrier, or other travel supplier, person or agency to provide the bargained-for travel arrangements for reasons other than Bankruptcy or Default;
18. a mental or nervous condition, unless hospitalized for that condition while the Plan is in effect for You;
19. a loss that results from a Sickness, Injury, disease or other condition, event or circumstance which occurs at a time when the Plan is not in effect for You; or
20. an assessment from a Legally Qualified Physician advising You in writing that You, a Traveling Companion, Family Member or Business Partner booked to travel with You are not Medically Fit to Travel, as defined in the Plan, at the time of purchase of Coverage for a Trip.

The plans also contain exclusions that apply specifically to Baggage and personal Effects.

Trip Cancellation and Trip Interruption benefits are only payable if a trip is canceled or interrupted due to a covered peril

For R774 only: Excess Insurance: The insurance provided by this Plan shall be in excess if all other valid and collectible Insurance or indemnity. If at the time of the occurrence of any loss there is other valid and collectible insurance or indemnity in place, We shall be liable only for the excess of the amount of loss, over the amount of such other insurance or indemnity, and applicable deductible. Recovery of losses from other parties does not result in a refund of plan payment paid.

For R774D only: The plans also contain exclusions that apply specifically to Baggage and personal Effects. The insurance provided (except for Accident and Sickness Medical Expense, Emergency Medical Evacuation, Medical Repatriation and Return of Remains) shall be in excess of all other valid and collectible Insurance or indemnity. If at the time of the occurrence of any loss there is other valid and collectible insurance or indemnity in place, We shall be liable only for the excess of the amount of loss, over the amount of such other insurance or indemnity, and applicable deductible. Recovery of losses from other parties does not result in a refund of plan payment paid.

WAIVER OF PRE-EXISTING CONDITION EXCLUSION

The exclusion for Pre-Existing Condition will be waived provided:

- (a) Your payment for this Plan is received within 21 days of the date Your initial Payment or Deposit for Your Trip is received; and
- (b) You are not disabled from travel at the time Your plan payment is paid.

Non-Insurance Services

Generali Global Assistance

FootprintID®

Blue Ribbon Bags

Generali Global Assistance Non-Insurance Service

Multi-lingual professionals are available 24 hours a day to provide help, advice and referrals for medical emergencies. We will help you locate local physicians, dentists, or medical facilities, and provide services for:

- Medical Consultation & Monitoring
- Medical Evacuation Arrangements
- Emergency Medical Payments
- Prescription Assistance
- Repatriation of Remains Arrangement
- 24 Hour Legal Assistance
- Language Interpretation Services
- Emergency Cash Transfer

A complete list of these services is included in your Plan Document.
To contact Generali Global Assistance:

Within U.S. & Canada
1-855-205-1232

Collect Worldwide
1-954-370-3251

Portable Personal Health Record Provided By FootprintID®

FootprintID® provides a secure solution for individuals to take control of their medical records and enables immediate access wherever they are in the world.

- Medical and Health Information is always at your fingertips anywhere travel takes you
- Documents are easily shared with physicians
- We, mobile and telephone access with reliable 24/7 support
- FootprintID® works anywhere in the world
- Register at tripmate.footprintid.com

Blue Ribbon Bags provides a service that will track and expedite the return of your delayed airline baggage.

- Find and return checked baggage delayed by the airline
- Blue Ribbon Bags covers EVERY flight, on EVERY airline, everywhere in the world
- Blue Ribbon Bags will update you every step of the way. Don't waste time tracking your luggage!
- Report lost airline bags at tripmate.blueribbonbags.com

YOUR PLAN NUMBER:

BASIC PLAN # R774 | DELUXE PLAN # R774D

Customer Service and Claims

This advertisement contains highlights of the plans developed by Trip Mate Inc., which include travel insurance coverages underwritten by United States Fire Insurance Company, Principal Office located in Morristown, New Jersey, under form series, T210 et al and TP-401 et al, and non-insurance Travel Assistance Services provided by Generali Global Assistance, FootprintID®, and Blue Ribbon Bags. The terms of insurance coverages in the plans may vary by jurisdiction and not all insurance coverages are available in all jurisdictions. **Insurance coverages in these plans are subject to terms, limitations and exclusions including an exclusion for pre-existing medical conditions.** In most states, your travel retailer is not a licensed insurance producer/agent, and is not qualified or authorized to answer technical questions about the terms, benefits, exclusions and conditions of the insurance offered or to evaluate the adequacy of your existing insurance coverage. Your travel retailer may be compensated for the purchase of a plan and may provide general information about the plans offered, including a description of the coverage and price. The purchase of travel insurance is not required in order to purchase any other product or service from your travel retailer. CA DOI toll free number is 800-927-4357. The cost of your plan is for the entire plan, which consists of both insurance and non-insurance components. Individuals looking to obtain additional information regarding the features and pricing of each travel plan component, please contact Trip Mate, Inc. (dba Trip Mate Insurance in CA and UT; CA license #0805270); 880 SW 145th Avenue #400 Pembroke Pines, FL 33027; 1-833-297-2258; assistancefees@tripmate.com. While Trip Mate, Inc. markets the travel insurance in these plans on behalf of USF, non-insurance components of the plans were added to the plans by Trip Mate, Inc., and Trip Mate, Inc. does not receive compensation from USF for providing the non-insurance components of the plans.

HEART OF THE NORTH TOURS

THE ONLY WAY TO ROLL!



Trains of the Old West!

9 DAYS 8 NIGHTS

(Tuesday - Wednesday)

July 9th - 17th, 2024

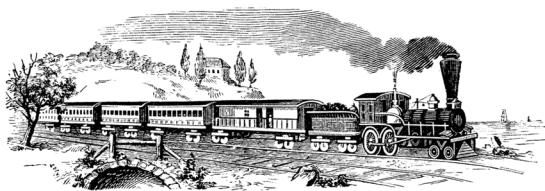
This Railroad Adventure Steams across some of the highest altitude railroads in America during the day and enjoy comfortable rooms and fine dining at night. It's an all-fun, all-natural Rocky Mountain High, combining adventure, history and romance into one great tour. Travel on five scenic trains of days gone by!

Tour Highlights:

- **FIVE** Scenic & Rugged Train Rides!
 - The Georgetown Scenic Railroad
 - The Silverton - Durango Railroad
 - The Cumbres & Toltec Railroad
 - Royal Gorge Route Railroad
 - Pikes Peak Scenic Cog Railroad
- Visit the Great Platte Archway
- Golden Spike Tower & Switching Yard
- Corkscrew Mountain Jeep Tour
- Garden of the Gods
- Manitou Cliff Dwellings
- Flying W Ranch Dinner Show

Also:

- Nine Nights of Select Accommodations including:
 - Two nights at the Drury Inn & Suites in Colorado Springs - one in Denver too!
- Sixteen Included meals:
 - Eight Hotel Breakfasts
 - Three Lunches
 - Five Dinners
 - Drury Inn 5:30 Kickback light dinners with complimentary wine or beer!
- All Taxes & Tips on above services
- Luggage Handling (*one bag per person*)



Pricing per person - based on room occupancy				
Description:	Double:	Triple:	Quad:	Single:
Tour cost:	\$3,899	\$3,699	\$3,499	\$4,799
TripAssure Basic	\$273*	\$259*	\$245*	\$336*
TripAssure Deluxe	\$331*	\$314*	\$297*	\$408*
Cancellation Waiver opt:	\$250	\$250	\$250	\$300

NOTE: Cancellation Waiver opt is NOT insurance - it adds protection to cancel for any reason - see offer for full details

**The plan cost includes the plan premium and a fee for the non-insurance assistance services.*

TripAssure is a registered trademark of Trip Mate - Travel protection is not required, but is highly recommended. Please contact Trip Mate customer service for all details about Trip Protection: 1-833-297-2258

\$600 per person deposit due with reservation
Final Payment is due by **MAY 20th, 2024**

And! As always on every multiple-day HEART OF THE NORTH TOUR:

- **At-home pickup** within designated zones at **NO Additional Charge**
- Deluxe Motorcoach driven by an experienced professional driver
- Free Bottled Water and Free on-board snacks!
- Free on-board WiFi! (within the United States)
- The attentive guidance, experience & hospitality of **Two HEART OF THE NORTH TOURS** Professional tour managers at your service throughout the entire tour!



CALL: 1-833-424-2700